



# **REED SWITCH**

## **JRAG-109B**

Deqing Jiahe Electronic Technology Co., Ltd.

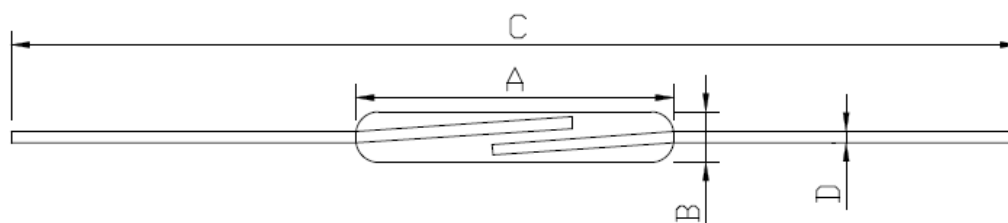
TEL: +86-572-8051676

FAX: +86-572-8051676

[sales@jiahe-electronic.com](mailto:sales@jiahe-electronic.com)

## 1. Package Dimension

Unit: mm



## 2. Features and application

### 1) Compact and Light

The reed switch can be mounted in a very limited space; it is ideal for use in miniaturized equipment;

### 2) High Speed Operation

Every movable element has a very low mass resulting in a high speed operation. This enables the reed switch to be used as an interface to a transistor or integrated circuit.

### 3) Hermetically Sealed

The switching elements of the reed switch are hermetically sealed in an inert gas atmosphere, so that they are never exposed to the external environment;

### 4) Long Life

The reed switch employs no sliding parts, so that is no fatigue related degradation in the quality of the materials used, ensuring a virtually unlimited mechanical life;

### 5) Wide application

The reed switch can be used into all kinds of automatical devices, sensor circuits etc.

### 3. Performance

#### Electronic Characteristics

Item	Unit	Specification	
Contact form	—	1A (Normally open)	
Contact material	—	Rhodium	
Pull in value	AT	25-40	
Min. drop out value	AT	10	
Max. contact rating	W	10	
Max. switching voltage	VDC	100	
Min. breakdown voltage	VDC	220	
Max. switching current	A	0.5	
Max. carrying current	A	1.0	
Max. initial contact resistance	mΩ	200	
Min. insulation resistance	Ω	1x10 <sup>8</sup>	
Max. operating time	ms	0.4	
Max. release time	ms	0.1	
Bounce time	ms	0.1	
Resonant frequency	KHz	4.0	
Max. operating frequency	Hz	400	
Max. contact capacitance	pF	0.3	
Electrical life @5V-1mA resistance load	—	1x10 <sup>8</sup>	
Dimension	A	mm	14
	B	mm	Ø2.0
	C	mm	46
	D	mm	Ø 0.5
Operating temperature	°C	-40~+125	